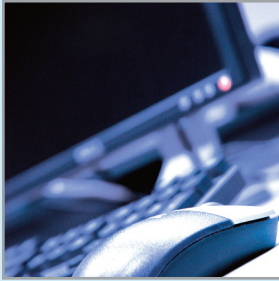




iTax UK LLP
Tax Advisers



Fixed Price Tax Appeal Programme

Why Fixed Price Tax Appeals?

Many businesses and individuals served with a tax assessment by HM Revenue & Customs ("HMRC") feel they cannot afford to appeal to the Tax Tribunal. Appealing against tax assessments can be highly stressful and can have far-reaching effects, both personally and commercially. Often the amount of the assessment, whilst significant to the business, is too low to justify an appeal against it using specialist tax advisers and tax Counsel. Many businesses, when faced with a tax assessment that could be appealed will

either take a commercial decision to settle the assessment by paying it or, alternatively, they will pursue an appeal without proper specialist representation.

iTax UK LLP believes that in the current economy all taxpayers - businesses and individuals alike - need all the help they can get. iTax UK LLP believes that it is intrinsically unfair that wrongly raised tax assessments should remain unchallenged with the consequence of financial hardship for the taxpayer and, more often than not, a resulting poor compliance record with HMRC.

What's the deal?

In order to help businesses in these difficult times, iTax UK LLP has put together a programme of fixed price tax appeals in respect of certain tax assessments raised by HMRC. Working in conjunction with a renowned set of specialist tax chambers in London, our team will:

- Review the legal basis for the assessment
- Identify any grounds of appeal
- Lodge a Notice of Appeal to the Tax Tribunal
- Instruct specialist tax Counsel to review your case and to represent you before the Tribunal

What are the costs?

We have set out in the table below a fee structure which we believe enables access to proper representation before the Tax Tribunal for most affected taxpayers.

AMOUNT OF ASSESSMENT	Fixed Fee (plus VAT)
up to £10,000	£2,000
£10,001 - £15,000	£3,000
£15,001 - £20,000	£4,000

The only additions to the Fixed Fee will be additional expenses appropriate to the conduct of the matter. These additional expenses will, however, normally be minimal.

We would wish to quote for assessments in higher amounts separately.

For further details please contact:

George Kelly: gkelly@itaxuk.com
Mobile: 07802 641552

Keith Hobson: khobson@itaxuk.com
Mobile: 07525 712277



iTax UK LLP
Tax Advisers

16 St. Martin's Le Grand
London, EC1A 4EN
t: 0207 397 8700
f: 0207 397 8400
e: info@itaxuk.com
w: www.itaxuk.com